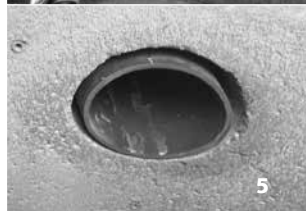


## Installation instructions Funke-ILA DN/OD 160 - 400

Internal Backdrop System Ortenau



Check packaging content for completeness and any damage.

### Scope of Delivery (1):

- Funke-ILA - Internal Backdrop with EPDM seal on the backside, with pre-drilled holes for fastening on the chamber wall incl. three stainless steel screws and dowels.
- Pipe clamp (stainless steel) with stainless steel hanger bolts and dowels in order to stabilize the vertical downpipe
- Bend 45°
- Installation instructions
- Reducer 250/200 (only for Funke-ILA 250)

### Installation:

Selection of the Funke ILA depending on the nominal diameters of the wall transition (160, 200, 250, 315 or 400).

As a preparation to the installation of the Funke-ILA a pipe penetration has to be created centrally to the pit axles. The pipe piece in the nominal diameters of 160 - 250 should extend approx. 3.5 cm into the chamber. Suitable materials for the pipe penetration are for example PVC-pipes according to EN1401-1 or polypropylene pipes according to DIN EN 1852.

For an existing pipe penetration, the internal extended pipe end should be cut to suite the groove depth of the Funke ILA (2-3).

If the pipe penetration is an eccentric one, respectively if it is a clay pipe, the pipe end has to be grinded flush with the chamber wall (4) and the cavity (5) between pipe and chamber wall has to be closed. **Recommendation:** Close cavity on site (for example with mortar or foam etc.), in order to prevent corrosion on the concrete structure which may occur due to the ingress of water.

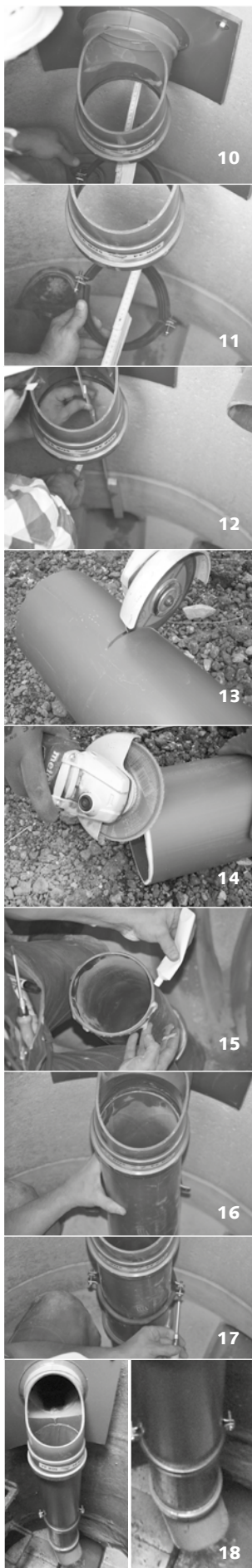
In order to achieve a level-invert connection, it is possible to insert a piece of pipe into the groove, and to cut it flush, (for example a piece of the downpipe) into the corrugation (6).

EPDM sealing on the backside of the Funke-ILA (7).

Insert, respectively hold the Funke-ILA (against the chamber wall) (8), mark bore holes in the pre-tapped holes and create Ø 10 mm drills. Drill with stop, maximum 60 mm in deep - depending on the concrete chamber quality/wall thickness. Insert the supplied dowels and screw down the Funke-ILA in the intended positions (9). If required install more dowels.

## Installation instructions Funke ILA DN/OD 160 - 400

Internal Backdrop System Ortenau



Installation of the downpipe (downpipe not included in the scope of delivery)

Firstly install the pipe clamp in order to stabilize the downpipe in the chamber. The distance of the pipe clamp to the chamber wall must be the same as the distance of the chamber wall to the socket (internal wall) of the Funke-ILA (10). Following, the distances for the different nominal diameters:

DN/OD 160: 35 mm,                      DN/OD 315: 72 mm,  
DN/OD 200: 48 mm,                  DN/OD 400: 108 mm.  
DN/OD 250: 57 mm.

Finally, the precise distance can be adjusted with the screw threads of the pipe clamp (11).

Install the pipe clamp at an angle of 90° to the internal backdrop on the chamber wall. Fathoming the bore position. Hanger bolts, dowels, pipe clamp and rubber inserts are included in the scope of delivery.

Measure the required length of the downpipe and bend (12),

afterwards cut the downpipe to the correct length (13)

and chamfer both spigot ends (14).

Now, put lubricant on one spigot end of the downpipe, and moisten the sealing of the backdrop socket and the sealing of the 45° bend with water. Afterwards push the bend with the end of the downpipe (15).

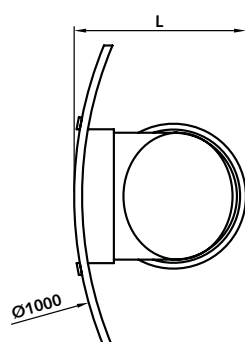
Open the pipe clamp and connect the spigot end of the downpipe to the spigot end of the Funke ILA (16).

For fixation screw down the pipe clamp (17).

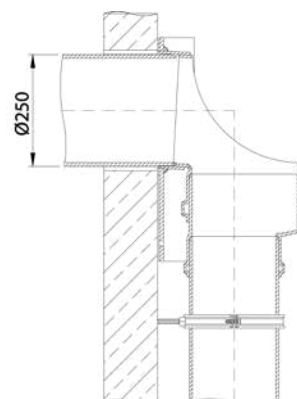
Installed Funke-ILA Internal Backdrop (18).

| Description      | Code chamber DN 1000 | Code chamber DN 1200 | Code chamber DN 1500 | Nominal diameter downpipe           |
|------------------|----------------------|----------------------|----------------------|-------------------------------------|
| Funke-ILA 160    | ILA1000160           | ILA1200160           | ILA1500160           | 160 mm                              |
| Funke-ILA 200    | ILA1000200           | ILA1200200           | ILA1500200           | 200 mm                              |
| Funke-ILA 250    | ILA1000250           | ILA1200250           | ILA1500250           | 200 mm (comes with 250/200 reducer) |
| Funke-ILA 315    | ILA1000315200        | ILA1200315200        | ILA1500315200        | 200 mm                              |
| Funke-ILA 400    | ILA1000400200        | ILA1200400200        | ILA1500400200        | 200 mm                              |
| Downpipe Kit 160 | ILARS160             |                      |                      | 160 mm (750 mm long)                |
| Downpipe Kit 200 | ILARS200             |                      |                      | 200 mm (750 mm long)                |
| Downpipe Kit 250 | ILARS250             |                      |                      | 250 mm (750 mm long)                |

| DN/OD  | 160 | 200 | 250 | 315 | 400 |
|--------|-----|-----|-----|-----|-----|
| L / mm | 217 | 271 | 333 | 372 | 472 |



The indicated distances in the drawing are needed for the three different versions of the ILA. For the Funke-ILA 160 the distance from the chamber wall is just 217 mm, for example. This provides a non-restricted chamber accessibility.



For the Funke-ILA 250 version, the downpipe is going to be connected with the help of a reducer 250/200 (included in the scope of delivery) as shown in the drawing on the left.